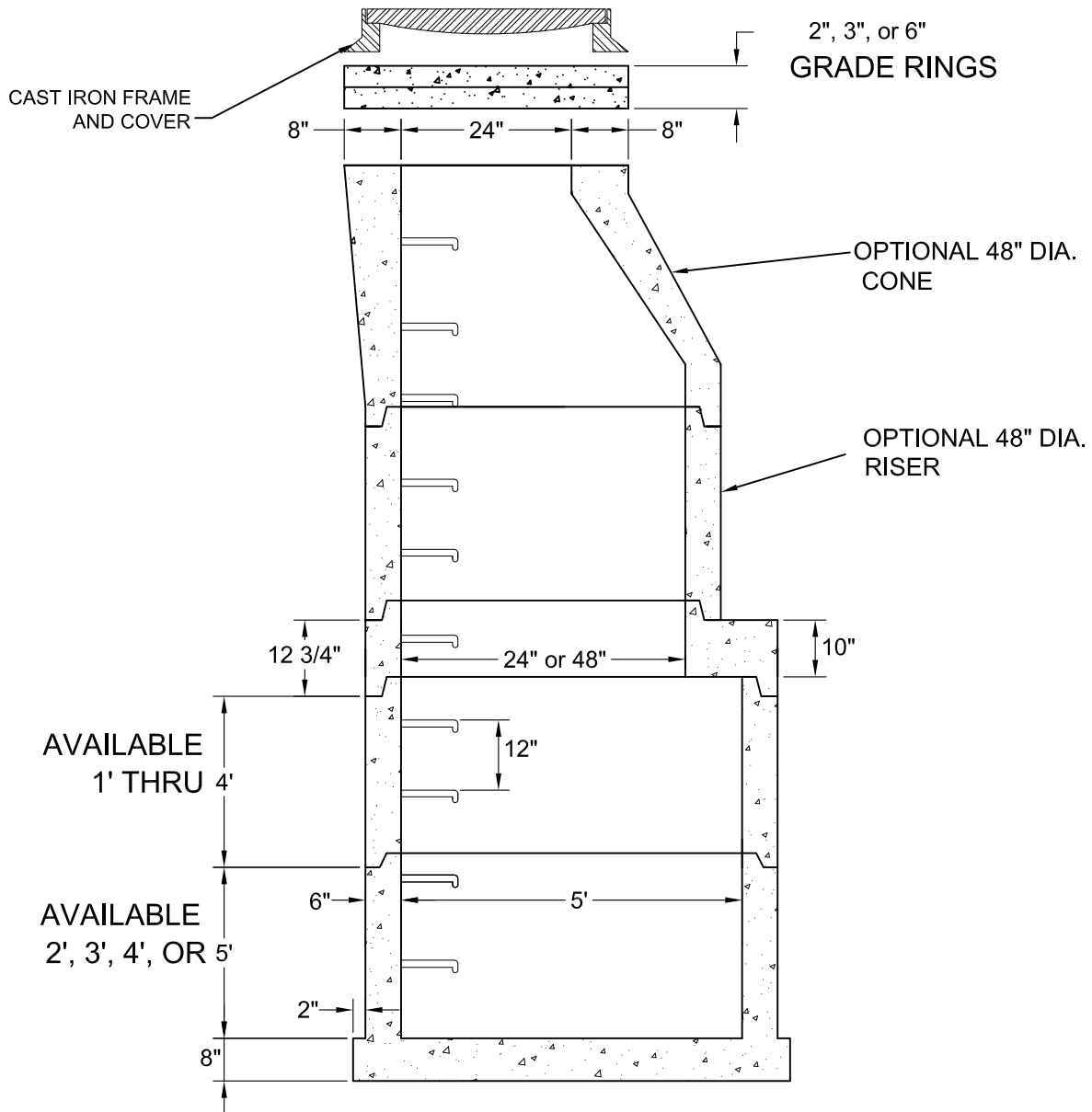


**GENERAL NOTES:**

1. Manhole is manufactured I.A.W. ASTM C-478.  
F'c= 4500 psi @ 28 days.
2. Dimensions to meet field requirements and project elevations.
3. Reinforcing: ASTM A-185 area 0.15 In./vertical ft.
4. Ladder rungs are steel reinforced, polypropylene coated type ML-10.
5. Manhole joints to be sealed using Hamilton-Kent O-rings or Conseal CS-102.
6. Pipe to manhole seal to be Star Seal gaskets.
7. Flow channels to be precast by Gillespie Precast
8. Manholes to be coated with Seaboard LN-12 quick drying Gilsonite paint (optional).



1-800-638-6884  
www.gillespieprecast.com

**PRECAST SANITARY MANHOLE  
60" Diameter**

DRAWN BY:

J.T.

DWG.:

1 of 1

SCALE:

Not to Scale

DATE:

4-20-04