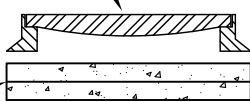
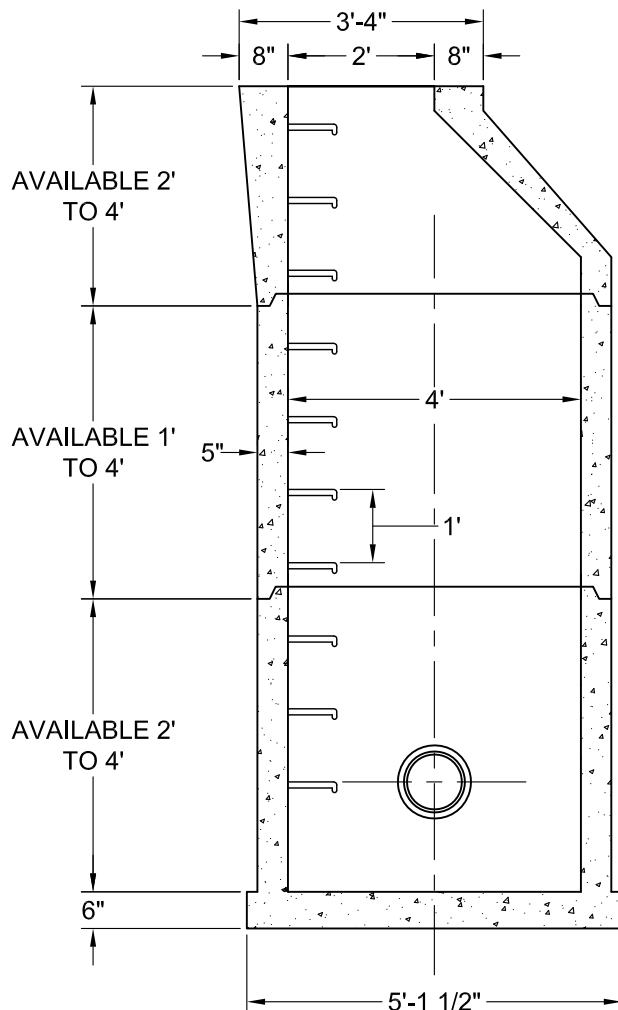
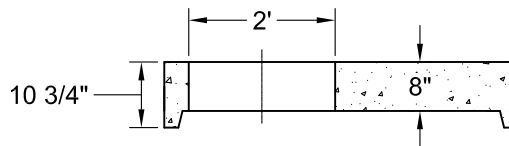


MANHOLE FRAME AND COVER



2", 3", or 6"
GRADE RINGS

Optional 8" Slab Top
(for shallow and pipe close to grade)



GENERAL NOTES:

1. Manhole is manufactured I.A.W. ASTM C-478.
F'c= 4500 psi @ 28 days.
2. Dimensions to meet field requirements and project elevations.
3. Reinforcing: ASTM A-185 area 0.12 in./vertical ft.
4. Ladder rungs are steel reinforced, polypropylene coated type ML-10.
5. Manhole joints to be sealed using Hamilton Kent O-rings or Conseal CS-102.
6. Pipe to manhole seal to be Star Seal.
7. Inverts and channels to be precast by Gillespie Precast.
8. Exterior to be coated with Seaboard LN-12 quick drying Gilsonite Paint (Optional).



1-800-638-6884
www.gillespieprecast.com

**PRECAST SANITARY MANHOLE
48"Ø Coated with Channels**

DRAWN BY:

J.T.

DWG.:

1 of 1

SCALE:

Not to Scale

DATE:

4-23-02