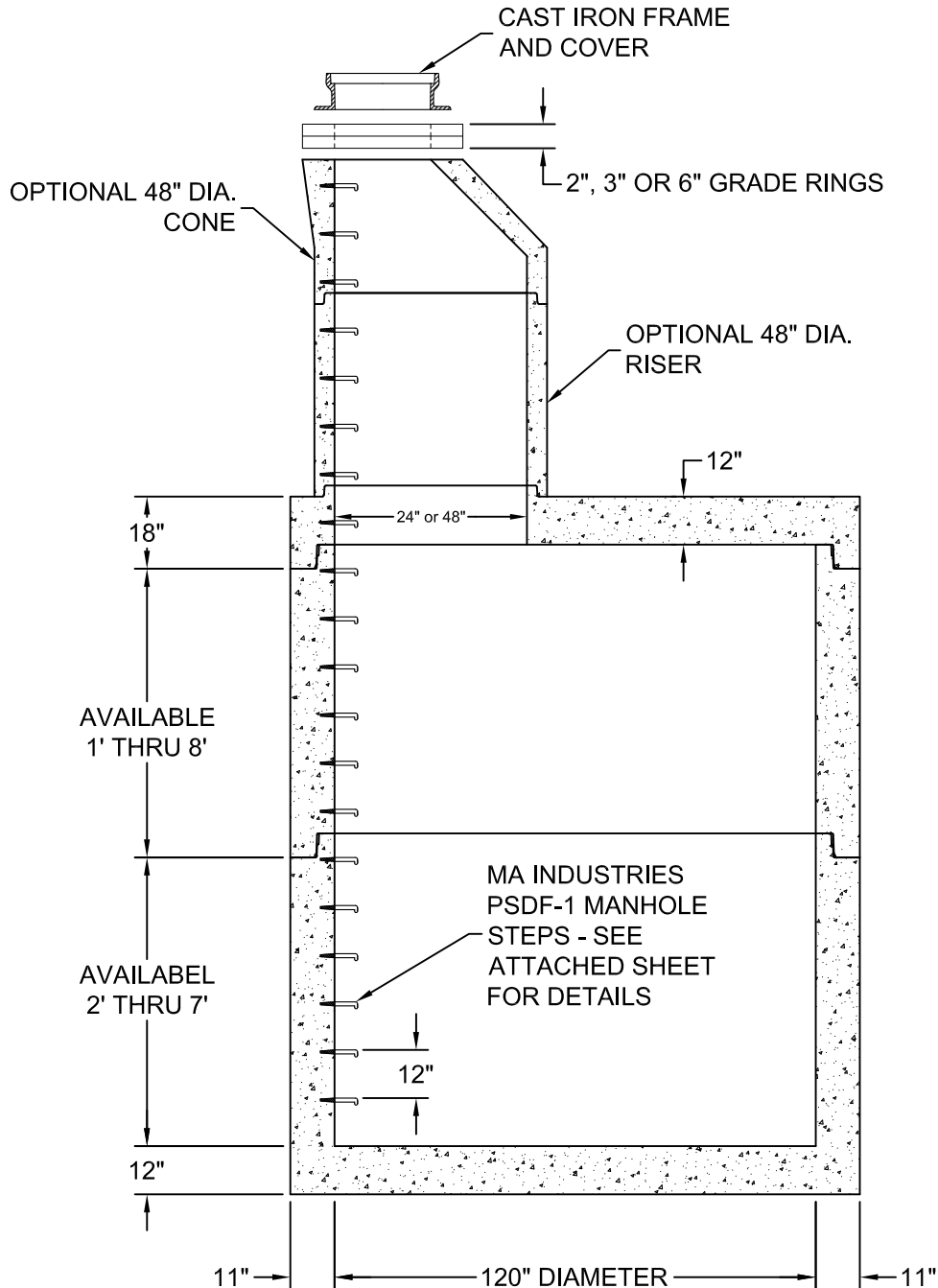


GENERAL NOTES:

1. Manhole is manufactured I.A.W. ASTM C-478.
2. Concrete strength: F'c = 4,500 PSI @ 28 days.
3. Dimensions to meet field requirements and project elevations.
4. Reinforcing per ASTM A-185.
5. Ladder rungs are steel reinforced, polypropylene coated type PSDF-1 by MA Industries.
6. Manhole joints to be sealed using CS-102 Butyl Sealant or mortar.
7. Pipe to manhole seal to be mortared by contractor.



1-800-638-6884
www.gillespieprecast.com

120" Dia. Storm Manhole

| | | | |
|-----------|--------|---------|--------|
| DRAWN BY: | JHP | DATE: | 7/9/07 |
| SCALE: | N.T.S. | DWG. #: | 1 of 1 |